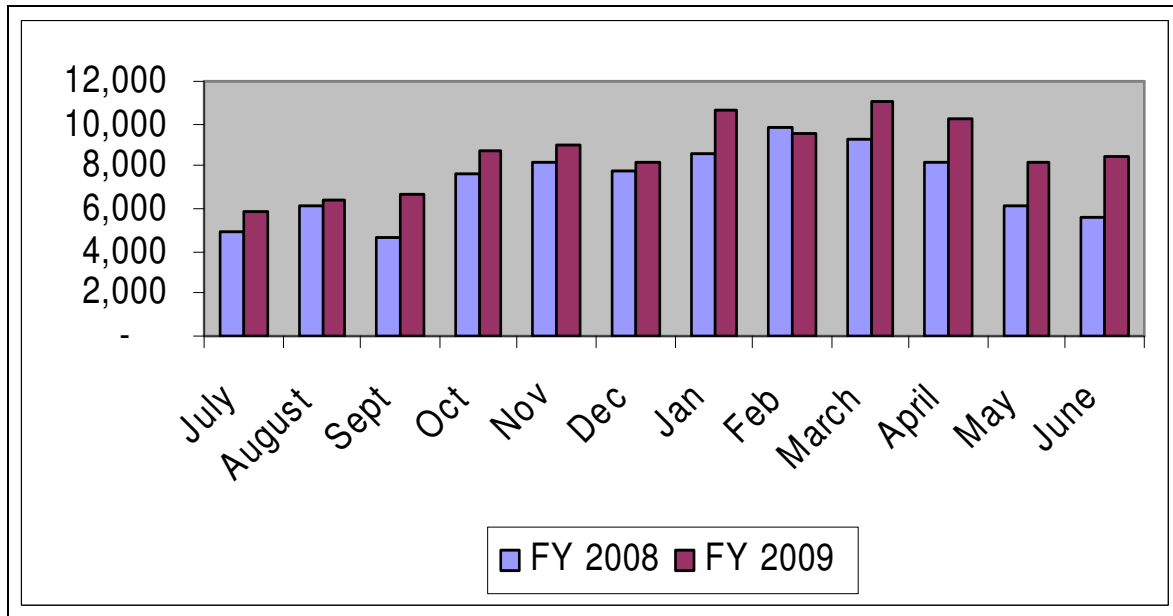


FY 2009 2-1-1 Report

June 2009

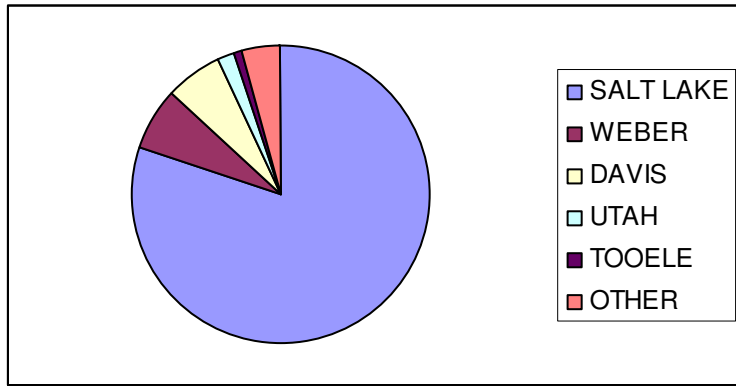
Calls



Needs (8,938 total needs)

Income Support/Assistance	1631	18.25%
Health Care	1513	16.93%
Food/Meals	1230	13.76%
Information Services	699	7.82%
Housing/Shelter	675	7.55%
Family and Community Life	627	7.01%
Legal/Justice	623	6.97%
Government Associations	503	5.63%
Mental Health/Addictions	414	4.63%
Volunteers/Donations	220	2.46%
Disability Issues	168	1.88%
Transportation	152	1.70%
Education	146	1.63%
Clothing/Personal/Household	112	1.25%
Insurance Issues	102	1.14%
Employment	93	1.04%
Consumer Assistance/Regulation	17	0.19%
Disaster Services	13	0.15%

Top 5 Calling Counties (SLCO = 80%)



Calls (YTD FY 2009 increase in calls = 18%)

	July	Aug	Sept	Oct	Nov	Dec	Jan	Feb	March	April	May	June
FY 2008	4,950	6,100	4,670	7,661	8,129	7,801	8,632	9,880	9,292	8,183	6,166	5,608
FY 2009	5,834	6,392	6,694	8,691	9,056	8,234	10,628	9,573	10,979	10,207	8,128	8,389

Top Referral Agencies (11,846 total referrals)

Salt Lake Community Action Program	1000
211 Information And Referral	624
Crossroads Urban Center	576
Catholic Community Services Of Utah	500
Utah Dept. of Workforce Services	267
Catholic Community Services Of Northern Utah	174
The Road Home	173
American Red Cross	152
Social Security Administration	150
Courts - Administrative Office	141
LDS Church Ward Boundaries	139
Salt Lake Donated Dental Services Clinic	137
Central City Community Health Center	127
South Main Public Health Center	126
Housing Authority Of The County Of Salt	123
Utah Legal Services, Inc.	122
Intermountain Neighborhood Clinic	117
Midvale Family Health Clinic	115
Stephen D. Ratcliff Community Health Center	110
Heat	103
Legal Aid Society Of Salt Lake, Inc.	103
Maliheh Free Clinic	100